

Upload and Download ECU files by Anonymous 09-10-2016

Take a backup copy of ECU ..

Here is how to do >

-----XXXXXXXX-----

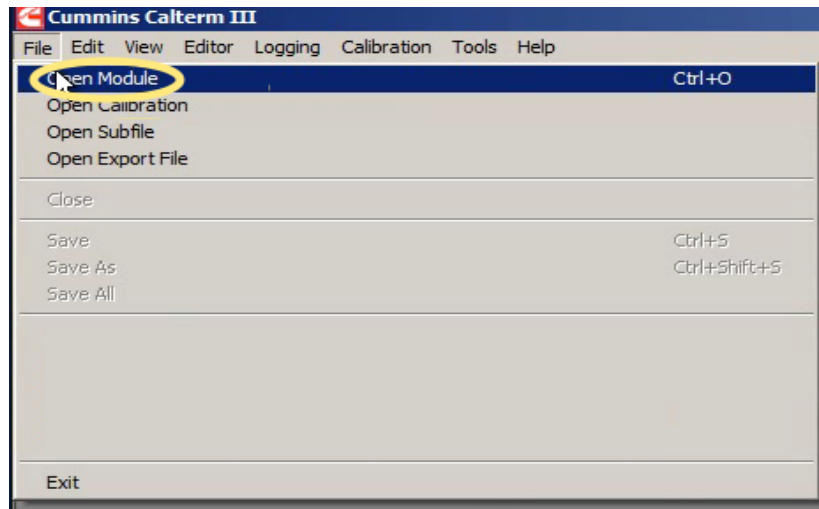
**** Connect to truck with adapter and make sure you can communicate with truck. Make sure to do dpf maintenance reset and erase all codes possible with Insite and stuff first. If you don do this then codes will get trapped into you backup and every time you restore backup codes will come back. Close Insite when done.**

-----XXXXXXXX-----

**** Ignition switch for truck in ON position and truck not running.**

**** Open Calterm and cancel anything that it wants to do on startup. You should be at blank window.**

**** Select Open Module from main menu ...**



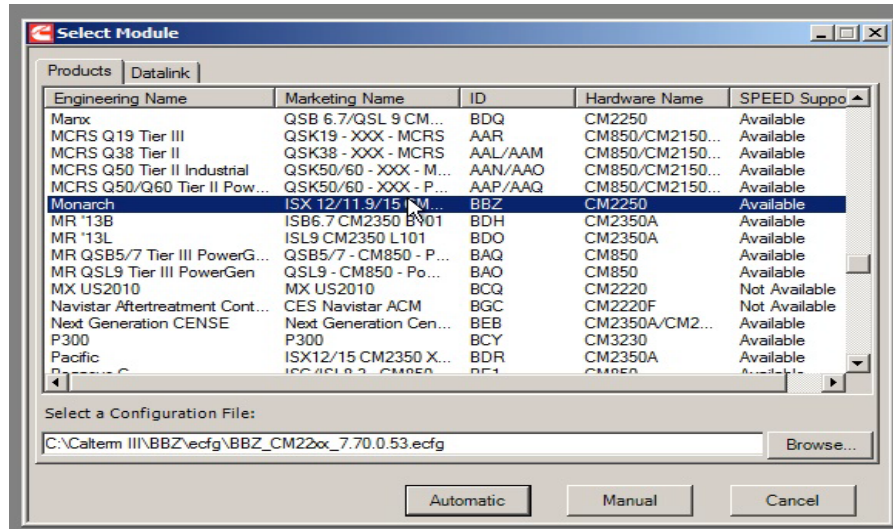
-----XXXXXXXX-----

**** Now choose what module. It is asking for what kind of engine ECU!. Choose what kind FIRST!.**

For 871 engine Choose "Eagle Red" from the list.

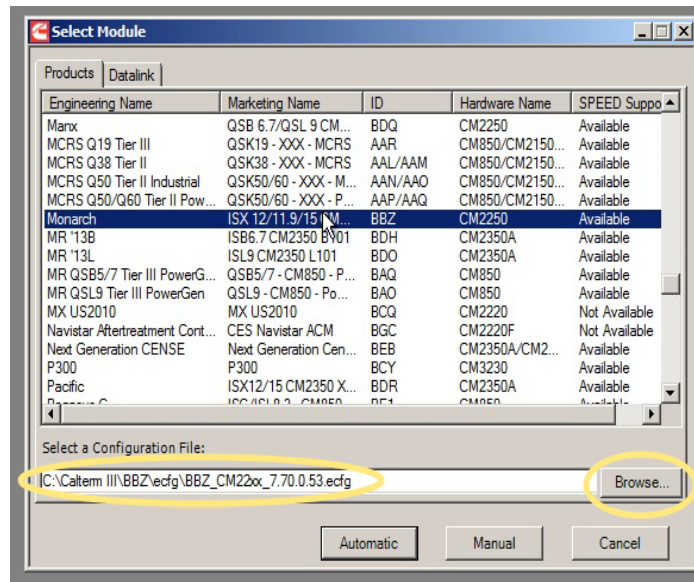
For 2250 engine Choose "Monarch" from the list.

For 2350 engine Choose "Pacific" from the list.



(Shown for 2250 in picture above)

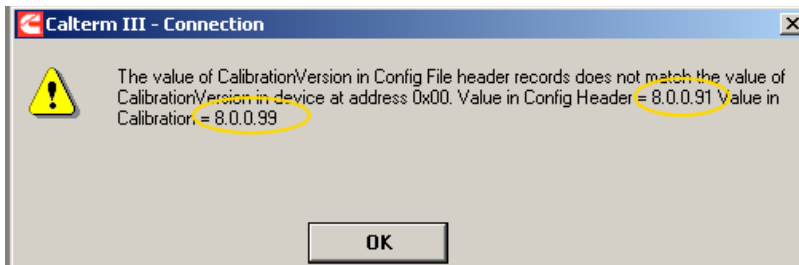
**** choose the right meta-file for your ecu. 871 is a BAC file, 2250 is a BBZ file, and 2350 is a BDR file. Without meta-file for right ECU you will get no where. These ECU files are not coming with calterm. They are separate so you must get these from someone. Some are hard to come by for new engines.**



**** choose "Automatic" button when you have it right..**

-----XXXXXXXX-----

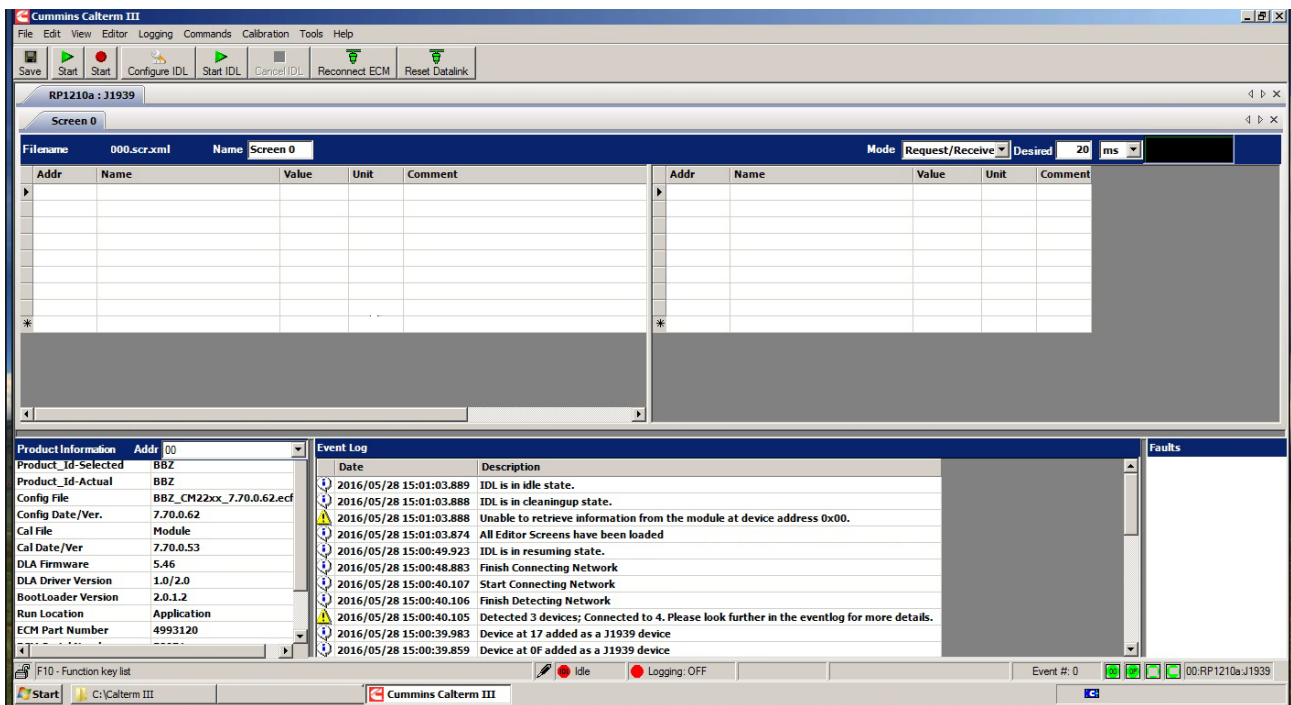
If you get THIS warning telling you that your Calibration Version does not match!!!...



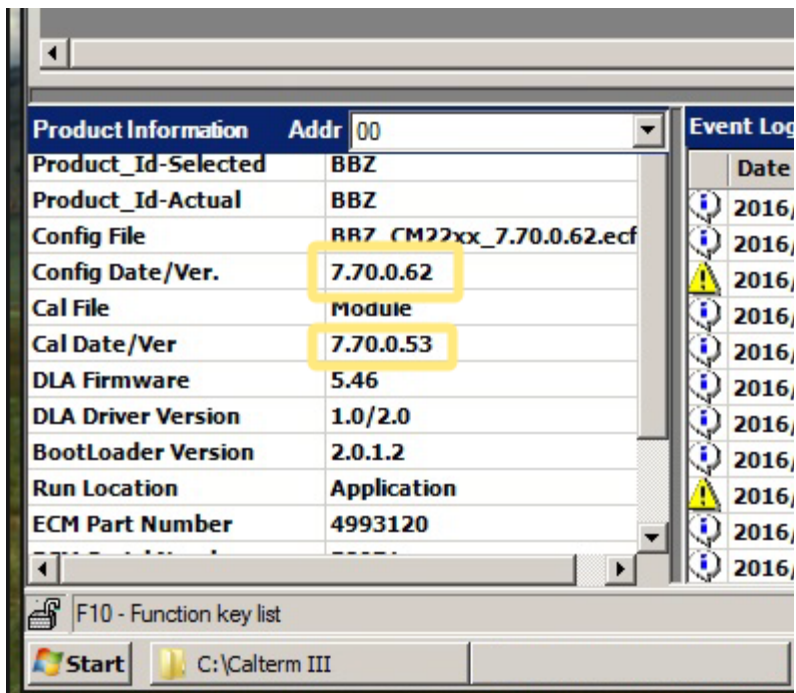
**** For upload and Download ONLY this is OK! Just choose OK button.** > You only need correct file of you make edit yourself. The circled numbers are telling you difference for to what file you have and what file it requires.

-----XXXXXXXX-----

**** Your window should look something like this.**

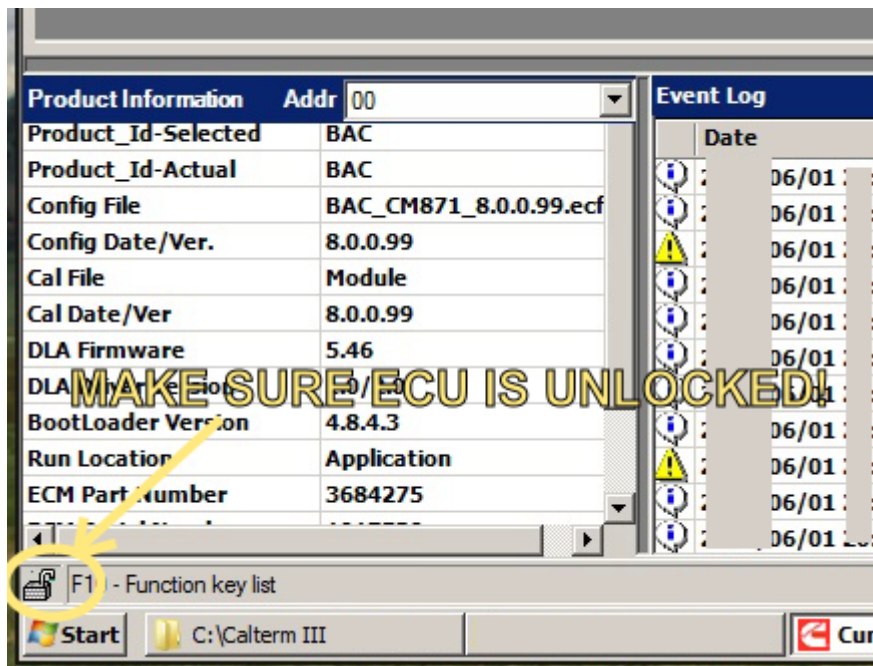


You can look at bottom left of window if you like to see if there is difference. “Config Dare/ver.” is the file you are using. The “Cal Date/ver.” Is file you need if you want to edit later on. This is no big deal if you are only upload or download file.

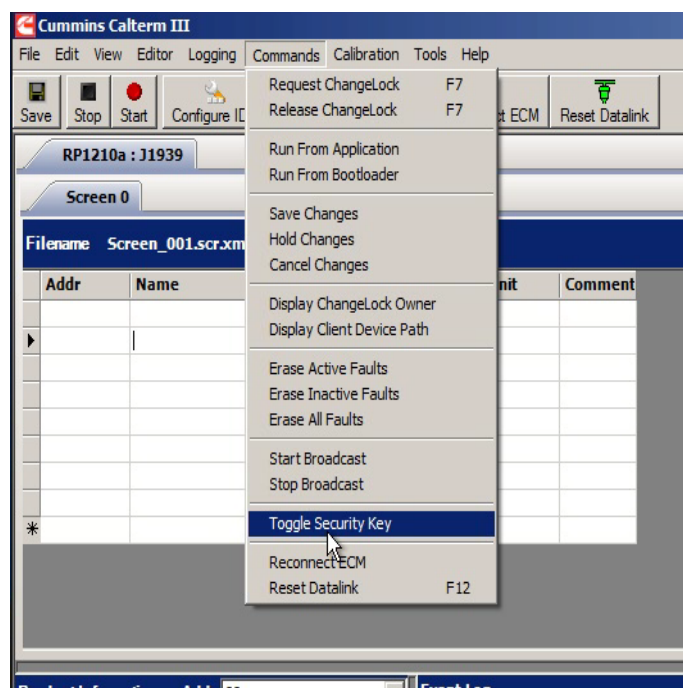


-----XXXXXXXX-----

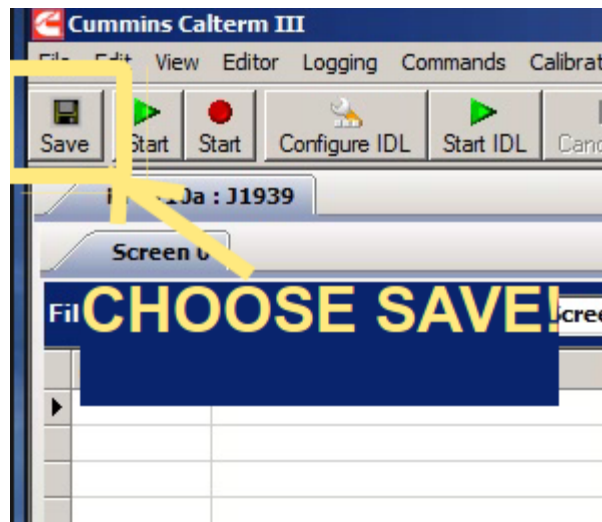
**** Make sure ECU is unlocked! - The padlock at bottom of window will be open when unlocked.**



**** If is NOT unlocked and padlock symbol is closed then you can switch it with “Toggle Security Key” from menu.**

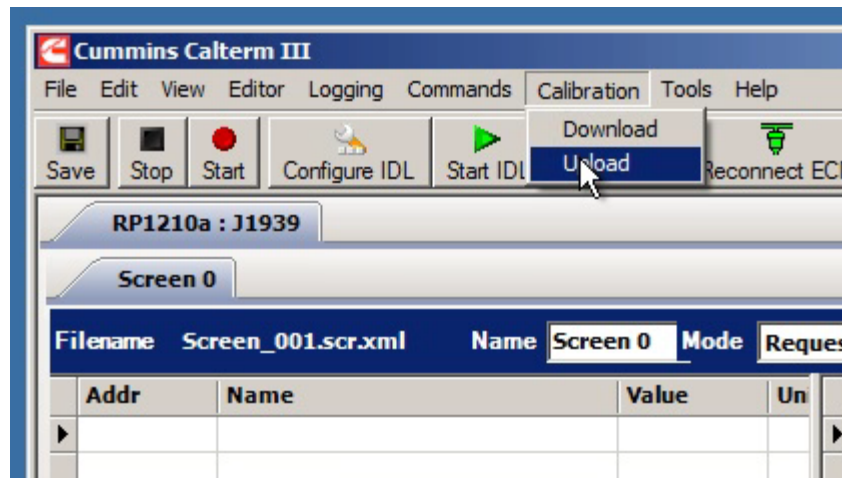


**** Use the “Save” button if you had to unlock it before going on. Unlock will not stay if you don't use save button right after unlocking it.**



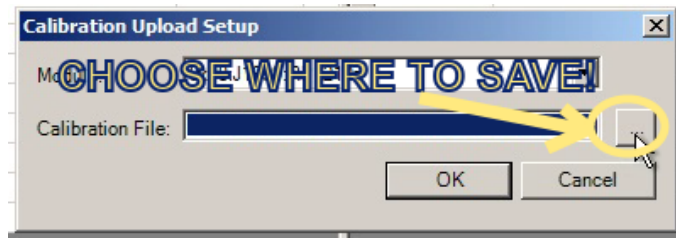
-----XXXXXXXX-----

**** With the ECU unlocked now you can take a backup of it to your computer. For to start backup Choose "Upload". UPLOAD IS FOR SEND TO YOUR PC!.**

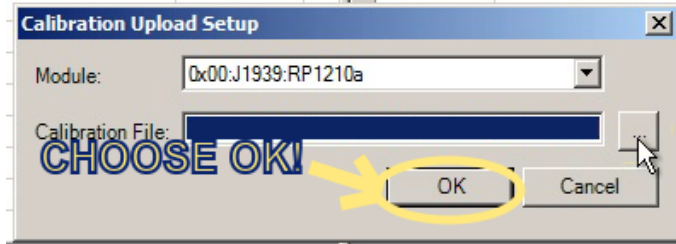


-----XXXXXXXX-----

**** Choose where to save the file ...**

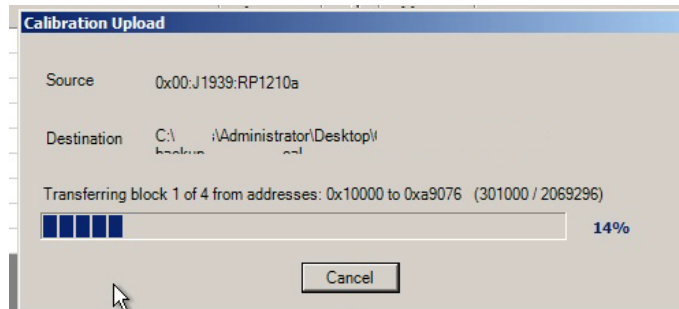


then choose "Ok".



-----XXXXXXXX-----

** Wait for to finish.



-----XXXXXXXX-----

** You now have backup.